

## What is NET?

The Non-Emergency Transportation (NET) Program provides transportation to Medicaid eligible consumers to medical appointments covered by Ohio Medicaid.

*The NET program is not for emergency transportation services.*



### Transportation Services Available

- NET Ride Tickets through Knox Area Transit (KAT) for transportation in county & out of county.
- Gas Vouchers - issued on a reimbursement basis.

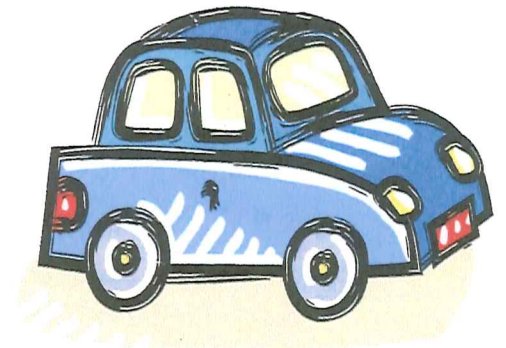


### **Knox County Department of Job & Family Services**

Opportunity Knox Employment Center  
17604 Coshocton Road  
Mount Vernon, OH 43050  
NET Line: 740.393-5306  
Fax: 740.397-5078

## **Knox County Department of Job & Family Services**

### **Non-Emergency Transportation**

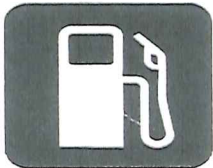


**NET Line:**

**740-393-5306**

## Gas Vouchers

- Gas vouchers will ONLY be issued upon completion of the Appointment Verification / Gas Voucher Reimbursement Request Form.
- The Gas Voucher Verification Request Form must be received by the agency within thirty (30) days of the medical appointment.
- Only one (1) gas voucher will be issued per household per day. The agency will issue a gas voucher for the greatest distance traveled per day.
- Only ten (10) gas vouchers will be allowed per month, per assistance group. Exceptions will be considered in cases of extreme medical conditions.



## Eligibility Requirements

- Individual must have a current Ohio Medicaid Identification Card.
- Travel must be to & from Medicaid providers offering Medicaid reimbursable services.
- Individual must not be eligible for other transportation already covered by Medicaid, such as ambulance, ambulette, long-term care facility, or hospice.

## **How do I request NET transportation?**

Individuals seeking transportation assistance need to call the NET Line at 740-393-5306 and request to be added to the NET program.



## KAT Transportation

- Requests for in county & out of county transportation can be made by calling KAT at 740-392-7433.
- KAT should only be called to schedule a ride after you have called the NET Line at 740-393-5306 & requested to be added to the NET program.
- Only twenty (20) ride tickets will be allowed per month, per assistance group. Exceptions will be considered in cases of extreme medical conditions.
- A verification form must be completed & returned to the agency for any medical appointment in which KAT provides transportation.

